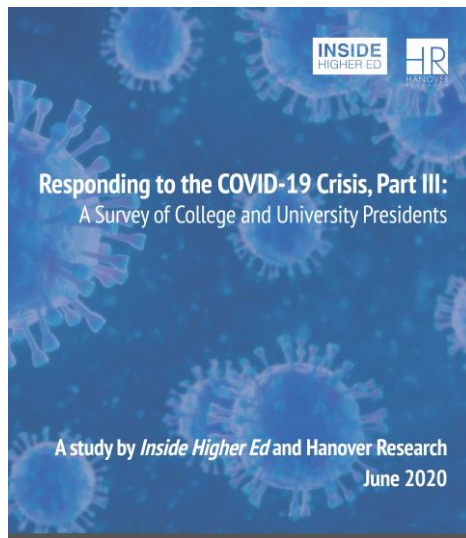




Responding to the Covid-19 Crisis: a Survey of Presidents, Part III



An *Inside Higher Ed* webcast
July 1, 2020
2 p.m. Eastern

Presenters

- Doug Lederman, editor, *Inside Higher Ed*,
doug.lederman@insidehighered.com
- Scott Jaschik, editor, *Inside Higher Ed*,
scott.jaschik@insidehighered.com

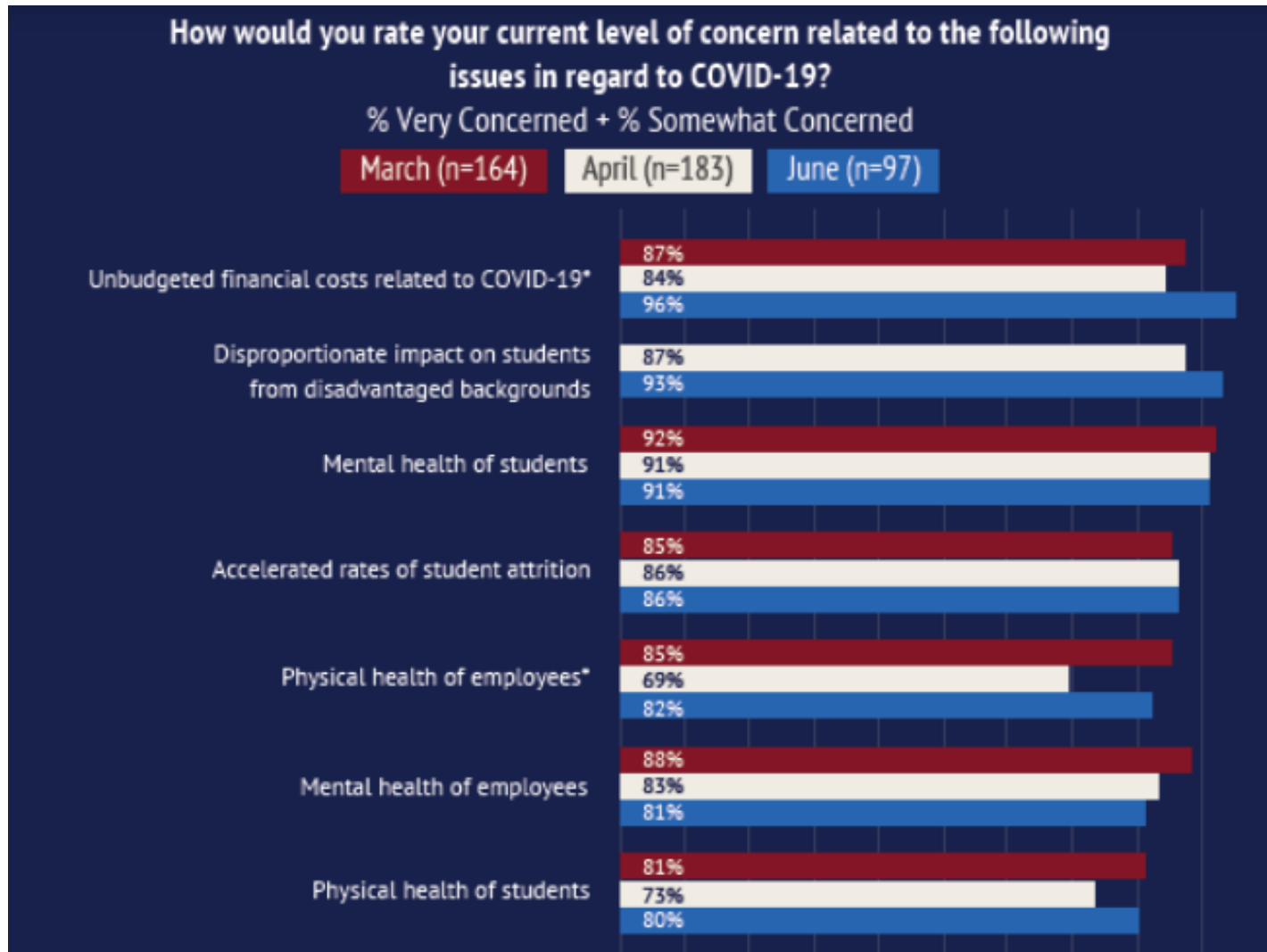
The Survey's Goals

- *Inside Higher Ed's* mission: keep higher ed professionals informed so they can help institutions fulfill *their* missions. Needed most of all in turbulent times.
- Do this every day on our website, but also with surveys, special reports, events, etc.
- This is third “flash” survey we’ve done of presidents’ perspectives and actions re: COVID-19 and recession. First two in mid-March and mid-April.

Methodology

- Questions prepared by *Inside Higher Ed*, in collaboration with Hanover Research.
- Polling conducted by Hanover mid-June, 2 months after last survey.
- 97 presidents responded; 57% public 2- and 4-year, 43% private nonprofit. Decline in overall response rate.
- Complete anonymity for respondents.

Short-Term Concerns: Unexpected Costs, Student/Employee Health



Mixed Assessment of Remote Learning

	% Extremely/ Very Successful
Making Tech Support Available	81%
Achieving Faculty Buy-In	73%
Ensuring High Academic Standards	55%
Providing Tutoring/Student Support	53%
Training Less-Experienced Faculty	47%
Ensuring Equitable Access for Students	45%
Maintaining Student Engagement	31%
Promoting Student Well-Being	17%

It's All About Fall

- 2/3 of presidents say in-person instruction will resume by fall; 8% by January; 20% unsure.
- 3/4 to reopen campus dining and residence halls by fall.
- 59% expect to restart athletics programs by fall, 30% envision uncertain timeline.

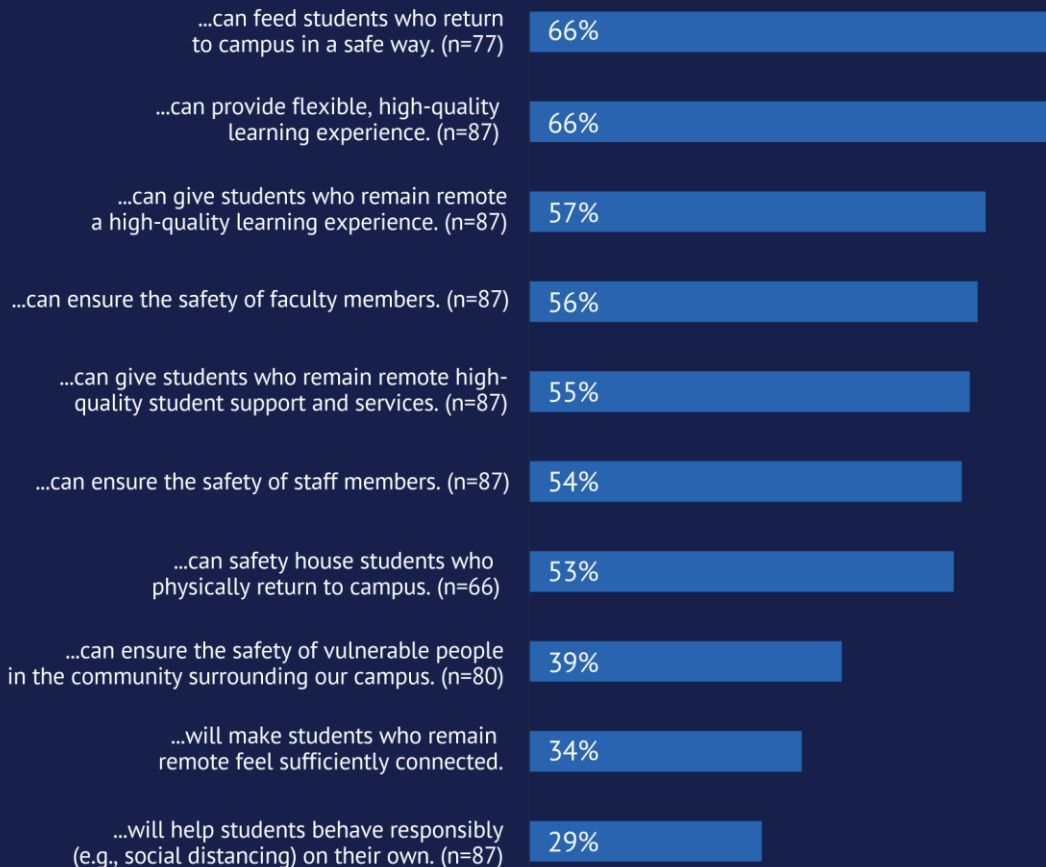


[This Photo](#) by Unknown Author is licensed under [CC BY-SA-NC](#)

How Confident Are They?

Please rate your level of confidence for your institution going into Fall 2020 for the following items: *My institution...*

% Extremely Confident + % Very Confident



- More confident they can effectively educate and safely house students on campus than that they can protect them from themselves.
- More confident they can educate students remotely than that they can keep them engaged and connected.

Financial Worries

- About 9 in 10 presidents very or somewhat concerned about enrollment declines (91%), overall financial stability (88%), ability to afford faculty and staff (81%). Other top concern: inequitable impact on underrepresented students (89%).
- Rising concerns: 72% worried about perceived decrease in value of higher education (60% in April, 48% in March). Also decline in donor giving rates (69% in June, up from 56% in March) and demands for tuition and room and board reimbursement.

Responses to Financial Concerns

- About half of presidents said their institutions had curtailed their workforces or cut employee support through furloughs or layoffs or cuts in salaries or benefits. 25% of those who had cut their workforce said they expect never to reverse them. Same for 29% of those who had reduced benefits.
- 40-50% of those who hadn't already reduced reduced workforce or furloughed employees said they planned to in the months ahead.



This Photo by Unknown Author is licensed under [CC BY-SA](#)

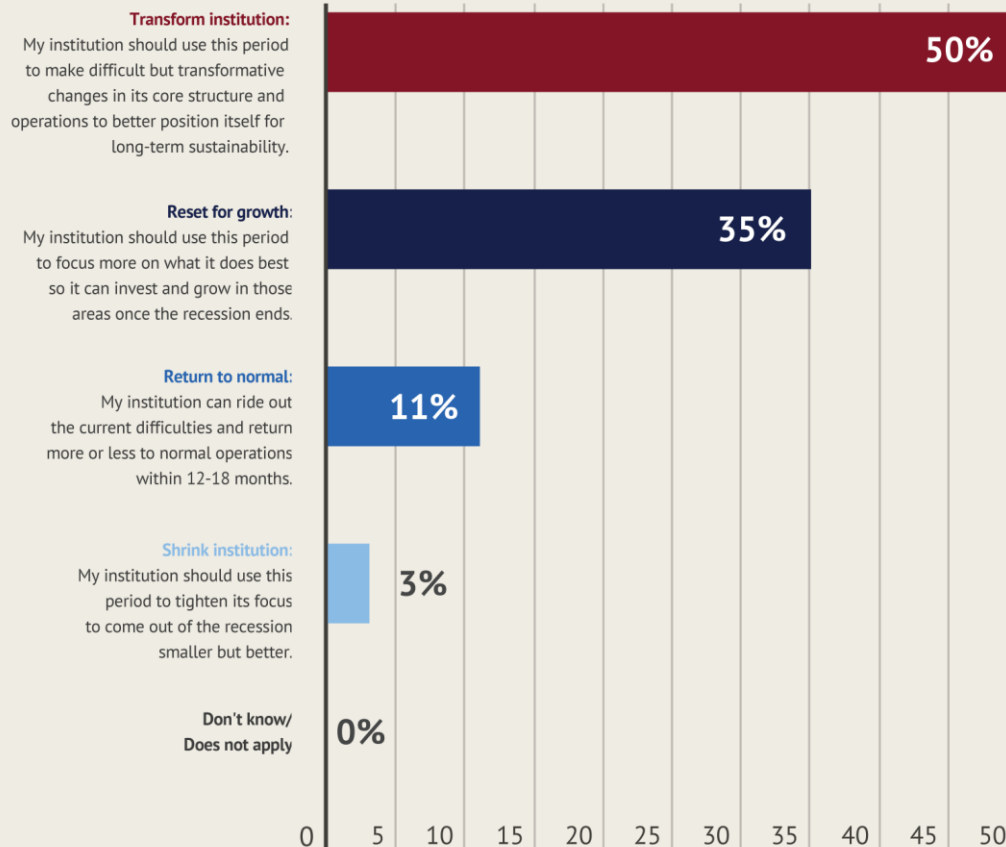
Responses to Financial Concerns (2)

Likelihood of actions to boost revenue/cut costs:

- Lobby for more federal/state support (89%)
- Reassess long-term mix of F2F/online (80%)
- Cultivate new donor bases (76%, from 87%)
- Reduce academic portfolio (55%, from 41%)
- Make unscheduled endowment draws (33%)
- Reconsider tenure policies (12%)

Transform, Grow, Shrink?

Which of the following most closely reflects your view of how your institution will respond to the COVID-19 pandemic and economic recession?

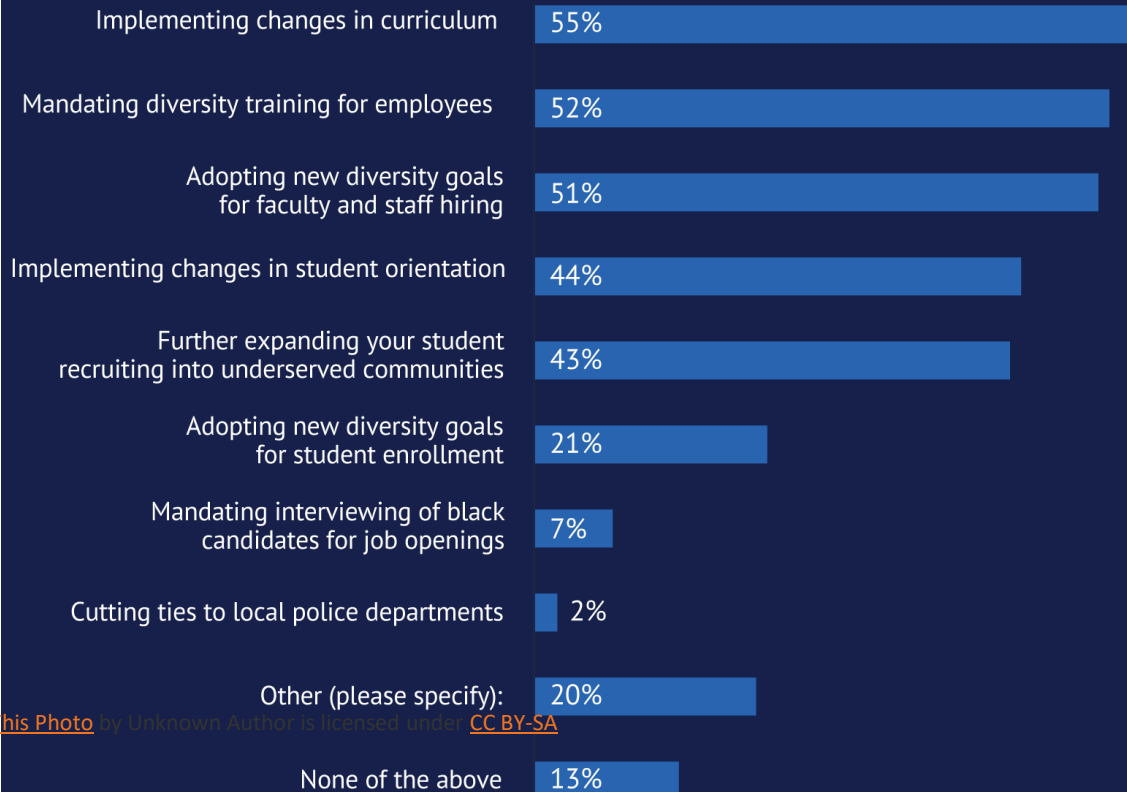


Help From Elsewhere: Operational Support

- Financial health/operational planning (47%)
- Faculty training and development (44%)
- Instructional technology development (41%)
- Strengthening brand perception (39%)
- Marketing/communications (33%)

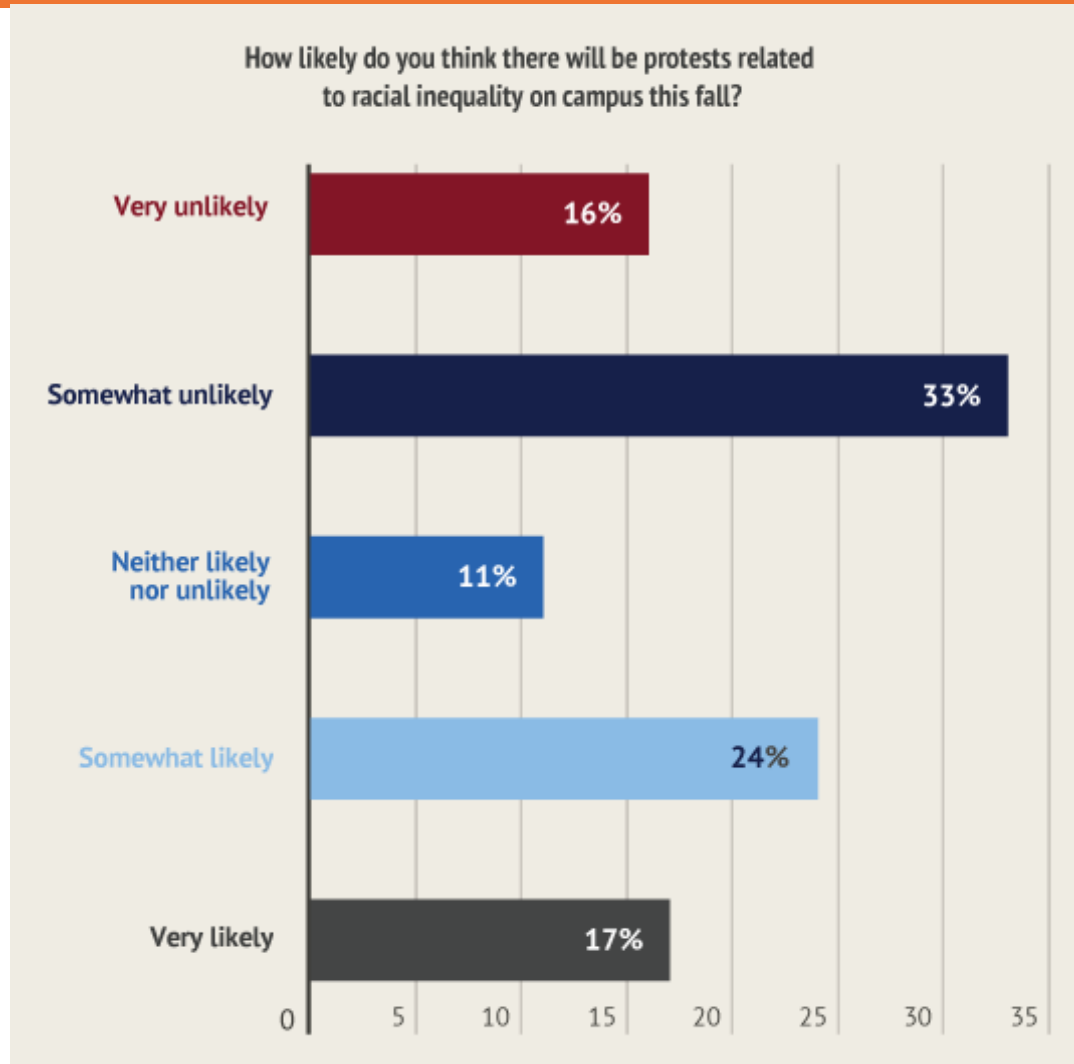
The National Discussion About Racism

Which of the following policies or structural changes has your institution taken adopted or considered taking adopting in response to concerns about longstanding structural racism in the U.S.? Please select all that apply. (n=88)



Creative Commons

Likelihood of Campus Protests



Questions and Resources

News Article:

<https://www.insidehighered.com/news/survey/college-presidents-increasingly-worried-about-perceived-value-degrees>

Survey report:

<http://www.insidehighered.com/booklet/responding-covid-19-crisis-part-iii-new-survey-college-and-university-presidents>

Thanks to Our Sponsors

